

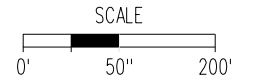


March, 2026

Legend

- Prop. M&O Pavement
- Prop. Full Depth Pavement
- Prop. Raised Concrete Median
- Prop. Raised Grass Median
- Prop. Concrete Sidewalk
- Prop. Shared Use Path
- Prop. Grassed Area
- Prop. Paved Entrance
- Exist. OH Utility Poles (from GIS)
- Prop. SWM Feature
- Exist. Right-of-Way (from GIS)
- Exist. Property Boundary (from GIS)
- Jurisdictional Limits (from GIS)
- Prop. Right-of-Way
- Prop. Temp. Ease.
- Prop. Perm. Ease.
- Prop. Perm. Utility Ease.

Location: Albemarle County



Sheet 1 / 3

US 29 NB / US 250 EB Off-Ramp Improvements



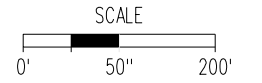


March, 2026

Legend

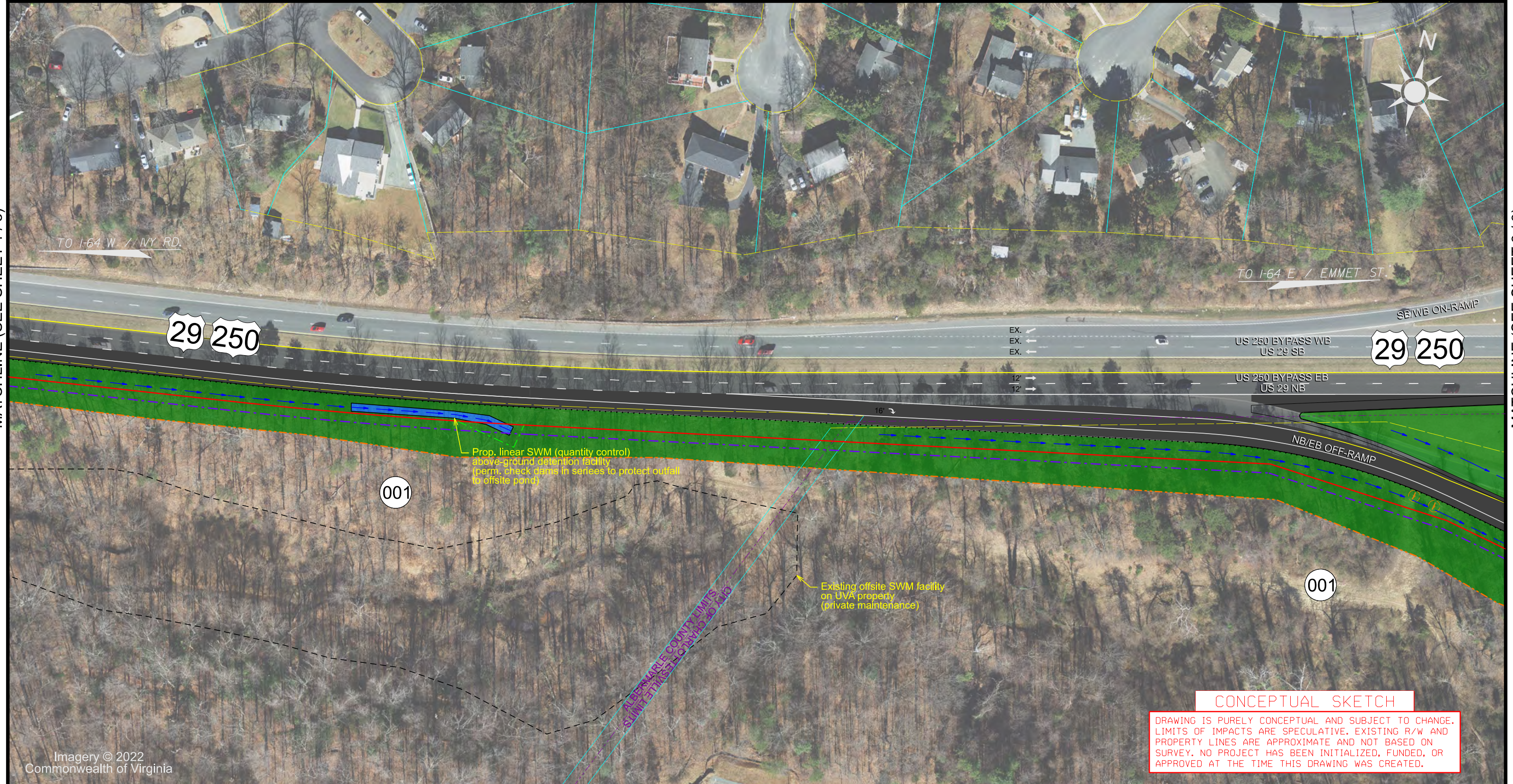
- Prop. M&O Pavement
- Prop. Full Depth Pavement
- Prop. Raised Concrete Median
- Prop. Raised Grass Median
- Prop. Concrete Sidewalk
- Prop. Shared Use Path
- Prop. Grassed Area
- Prop. Paved Entrance
- Exist. OH Utility Poles (from GIS)
- Prop. SWM Feature
- Exist. Right-of-Way (from GIS)
- Exist. Property Boundary (from GIS)
- Jurisdictional Limits (from GIS)
- Prop. Right-of-Way
- Prop. Temp. Ease.
- Prop. Perm. Ease.
- Prop. Perm. Utility Ease.

Location: Albemarle County



Sheet 2 / 3

US 29 NB / US 250 EB Off-Ramp Improvements



MATCHLINE (SEE SHEET 1 / 3)

MATCHLINE (SEE SHEET 3 / 3)

CONCEPTUAL SKETCH

DRAWING IS PURELY CONCEPTUAL AND SUBJECT TO CHANGE. LIMITS OF IMPACTS ARE SPECULATIVE. EXISTING R/W AND PROPERTY LINES ARE APPROXIMATE AND NOT BASED ON SURVEY. NO PROJECT HAS BEEN INITIALIZED, FUNDED, OR APPROVED AT THE TIME THIS DRAWING WAS CREATED.

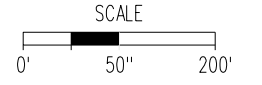


March, 2026

Legend

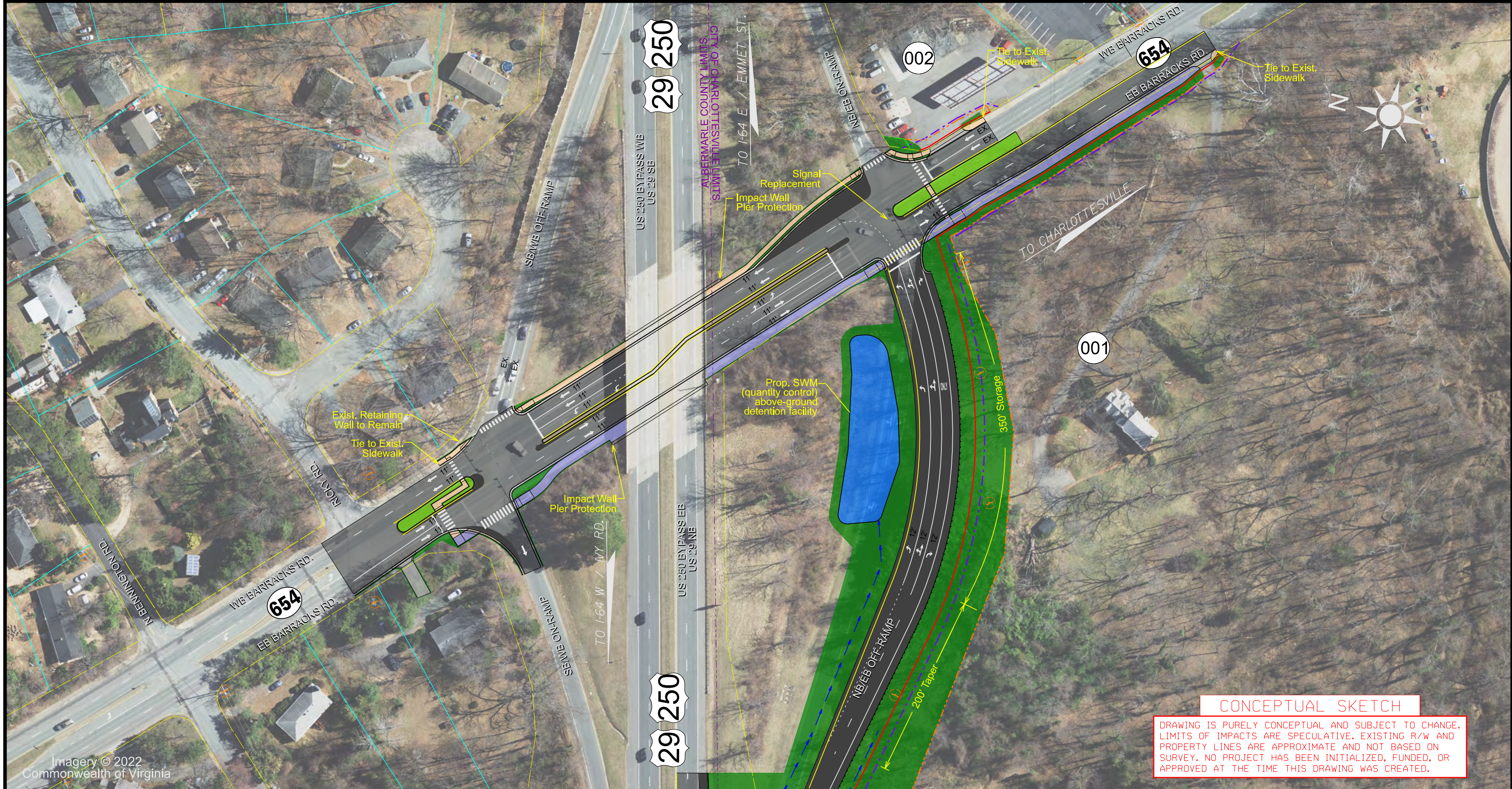
- Prop. M&O Pavement
- Prop. Full Depth Pavement
- Prop. Raised Concrete Median
- Prop. Raised Grass Median
- Prop. Concrete Sidewalk
- Prop. Shared Use Path
- Prop. Grassed Area
- Prop. Paved Entrance
- Prop. SWM Feature
- Exist. Right-of-Way (from GIS)
- Exist. Property Boundary (from GIS)
- Jurisdictional Limits (from GIS)
- Prop. Right-of-Way
- Prop. Temp. Ease.
- Prop. Perm. Ease.
- Prop. Perm. Utility Ease.
- Exist. OH Utility Poles (from GIS)

Location: Albemarle County



Sheet 3 / 3

US 29 NB / US 250 EB Off-Ramp Improvements



CONCEPTUAL SKETCH

DRAWING IS PURELY CONCEPTUAL AND SUBJECT TO CHANGE. LIMITS OF IMPACTS ARE SPECULATIVE. EXISTING R/W AND PROPERTY LINES ARE APPROXIMATE AND NOT BASED ON SURVEY. NO PROJECT HAS BEEN INITIALIZED, FUNDED, OR APPROVED AT THE TIME THIS DRAWING WAS CREATED.